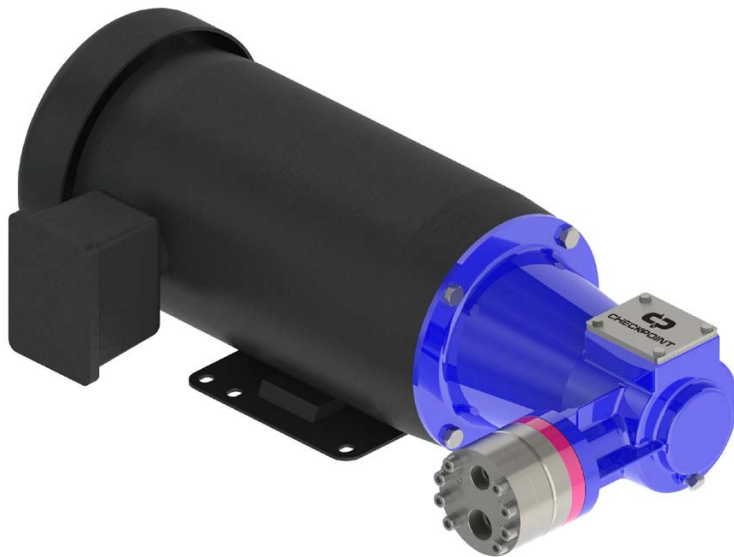


# Series MDZ Electric Pump



## PUMP CATEGORY

Type: Non-metallic Monodiaphragm  
Control: Motor Speed

## FLOW RATE

0.05 - 60 USG/H (0.19 - 227.13 L/H)

## PRESSURE

0 - 1,500 PSIG (0 - 103 BARG)

## SUPERIOR DESIGN

- Durable, High-Quality Materials
- Accurate and Repeatable Injection
- Quick Maintenance and Low Downtime
- High Return on Investment
- Runs Dry Without Damage
- Particulate Tolerant
- Zero Leakage

## CHEMICAL RESISTANCE

Proprietary, high-quality seal materials enable CheckPoint pumps to provide unparalleled chemical resistance. Wetted components are available in an array of materials. Chemical applications include, but are not limited to:

- Scavengers (H<sub>2</sub>S, O<sub>2</sub>, CO<sub>2</sub>)
- Hydrate Inhibitors (MeOH, MEG, LDHI)
- Foamers and Defoamers
- Corrosion, Scale, and Paraffin Inhibitors
- Clarifiers, Biocides, Bleaches, and Acids

## WARRANTY

CheckPoint guarantees 12 months of material and workmanship.

MDZ MODEL	GEARBOX RATIO	FLOW RATE (MINIMUM)	FLOW RATE (MAXIMUM)	FLOW RATE (MAXIMUM)	PUMP ONLY DIMENSIONS L X W X H IN (MM)	PUMP ONLY WEIGHT LB (KG)	SUCTION CONNECTION	DISCHARGE CONNECTION
		USG/H (L/H) 250 RPM	USG/H (L/H) 1,750 RPM (60Hz)	USG/H (L/H) 1,450 RPM (50Hz)				
MDZ-001	N/A	8.57 (32.44)	60 (227.13)	49.71 (188.17)	7.09 (180) X 10.02 (255) X 6.5 (165)	12 (5.4)	1/2" FNPT	3/8" FNPT
MDZ-005	5:1	1.72 (6.51)	12.04 (45.58)	9.98 (37.78)	9.07 (230) X 11.57 (294) X 5.9 (150)	18.5 (8.4)	1/2" FNPT	3/8" FNPT
MDZ-010	10:1	0.84 (3.18)	5.87 (22.22)	4.86 (18.40)	9.07 (230) X 11.57 (294) X 5.9 (150)	18.5 (8.4)	1/2" FNPT	3/8" FNPT
MDZ-025	25:1	0.31 (1.17)	2.17 (8.21)	1.80 (6.81)	9.07 (230) X 11.57 (294) X 5.9 (150)	18.5 (8.4)	1/2" FNPT	3/8" FNPT
MDZ-050	50:1	0.13 (0.49)	0.94 (3.56)	0.78 (2.95)	9.07 (230) X 11.57 (294) X 5.9 (150)	18.5 (8.4)	1/2" FNPT	3/8" FNPT
MDZ-100	100:1	0.05 (0.19)	0.32 (1.21)	0.27 (1.02)	9.07 (230) X 11.57 (294) X 5.9 (150)	18.5 (8.4)	1/2" FNPT	3/8" FNPT

Reduction ratios other than shown here are available upon request.

MDZ-001 model does not use a reduction gear drive.

Flow Rate values shown are at 1,000 PSIG (69.0 BARG) discharge with elastomeric diaphragms. Consult factory for PTFE diaphragms.

Tabular data should be used for quick reference only. See performance curves for accurate pump selection.

A minimum of 50 PSIG (3.45 BARG) back pressure is required to maintain flow accuracy.

Maximum Head Discharge Pressure: 1,500 PSIG (103 BARG) Metallic; 350 PSIG (24 BARG) PVDF; 250 PSIG (17 BARG) Polypropylene.

Maximum Inlet Pressure: 250 PSIG (All Head Materials).

Max Suspended Solids Size: 200 microns.

Weight & dimensions exclude motor. Weights shown are for metallic head.

